

Introducing TREND by Jeriko House

Precise German Engineering combined with superior East Asian craftsmanship make Jeriko House the hottest new offering in prefab. As you arrive at TREND, the unique and minimal lines draw you in for a closer look. You are immediately invited to indulge in the purity of the material combination of aluminum, glass, wood and stone.

lower level

The distinctive front door is custom made exclusively for Jeriko by Axolotl, an Australian company known for its unique design and fabrication methods. Bangkarai fixed wood louver panels provide a deliberate, yet beautiful veil for the frosted, bubble and clear glasses. The panel walls of the entry are created from a French pattern Bandung cream marble from West Java. The foyer and powder room floors come alive with a truffle dust exotic marble. The remaining floor of the lower level is an exquisite polished concrete, lined with interior wall panels of Bandung marble. The lower level is enclosed by the finest glass doors from Solarlux, a company known for its exceptional quality and functionality. Unique protection shading designed specifically for Jeriko will both insulate and protect during inclement weather. The casual environment of the stone bar is a center for entertainment, while the recreation room and outdoor living room provide additional space to lounge and enjoy the experience.

stairs

The floating stairs are finished in elegant yet durable teak.

second level

The second level flooring is predominantly teak stained to a beautiful rattan grey, the color of sonokeling, an elegant Indian rosewood used by emperors and kings in palaces throughout Asia.

hallway

The hallway welcomes you to the exotic richness and elegance of wood skin covered wall panels, a finish made from a fine layer of skin from authentic tree barks.

kitchen/dining room

The kitchen is an opulent combination of white lacquer, stainless steel, anodized aluminum and dark rich wood. Poliform USA provides the lacquer cabinets and stainless steel tops, while choices of beautiful stainless steel appliances are available from Miele, Sub-zero, Gaggenau and Wolf. The floor welcomes you with a rich, dark andesite stone. Serving as a backdrop for the dining room is an 8x10 foot wall panel, covered in a dark Nyatoh wood veneer that is as stunning and unique as it sounds.

living room

The living room invites you to experience an exquisite and truly unique 8x10 foot wall surface adorned with a coconut shell weave, created directly from the Balinese coconut shell, polished to a magical glow.

guest bath

The guest bathroom invites you to feel the unique texture of lava stone on your feet. A solid carved black granite counter rests on the wood vanity that continues to wrap the outside shell of the bath tub. The rich texture continues across the walls with strips of andesite stone from Tulung Agung.

kids bedroom/bathroom

This bedroom proves to be a parents' dream. Untreated teak furniture and cabinetry is Perhutani certified from sustainable Indonesian government-monitored plantations and is sanded to a butter-like finish. Thin striped bamboo flooring provides a durable and environmentally-conscious choice. The doors are made of bamboo core, while the walls consist of painted chalkboard to encourage the small ones to engage in free artistic expression. The bath features gorgeous bamboo striped ceramic tile walls and floors bearing the name heavenly fog. A flagstone sink has been hand carved out of river stone from a remote island in East Asia. The untreated teak vanity, shower floor and shower column round out this magnificent space.

master bedroom

The master bedroom is covered in beautiful teak flooring while the ceiling is wrapped in a beautiful bamboo weave that glows as light illuminates it from overhead. Automated blinds and draperies allow you to change moods at the touch of a button. A 60" high definition television is integrated seamlessly. Holistic in its approach and function, the walk-in closet is designed by Clos-ette, closet maker of the stars.

master bathroom

The master bathroom introduces a hand carved cream-colored Asian marble tub and matching sinks. The tub nearly 3 inches thick throughout stretches a luxurious 4x6 in diameter. The shower only promises a heavenly experience with its Kohler Water Tiles.

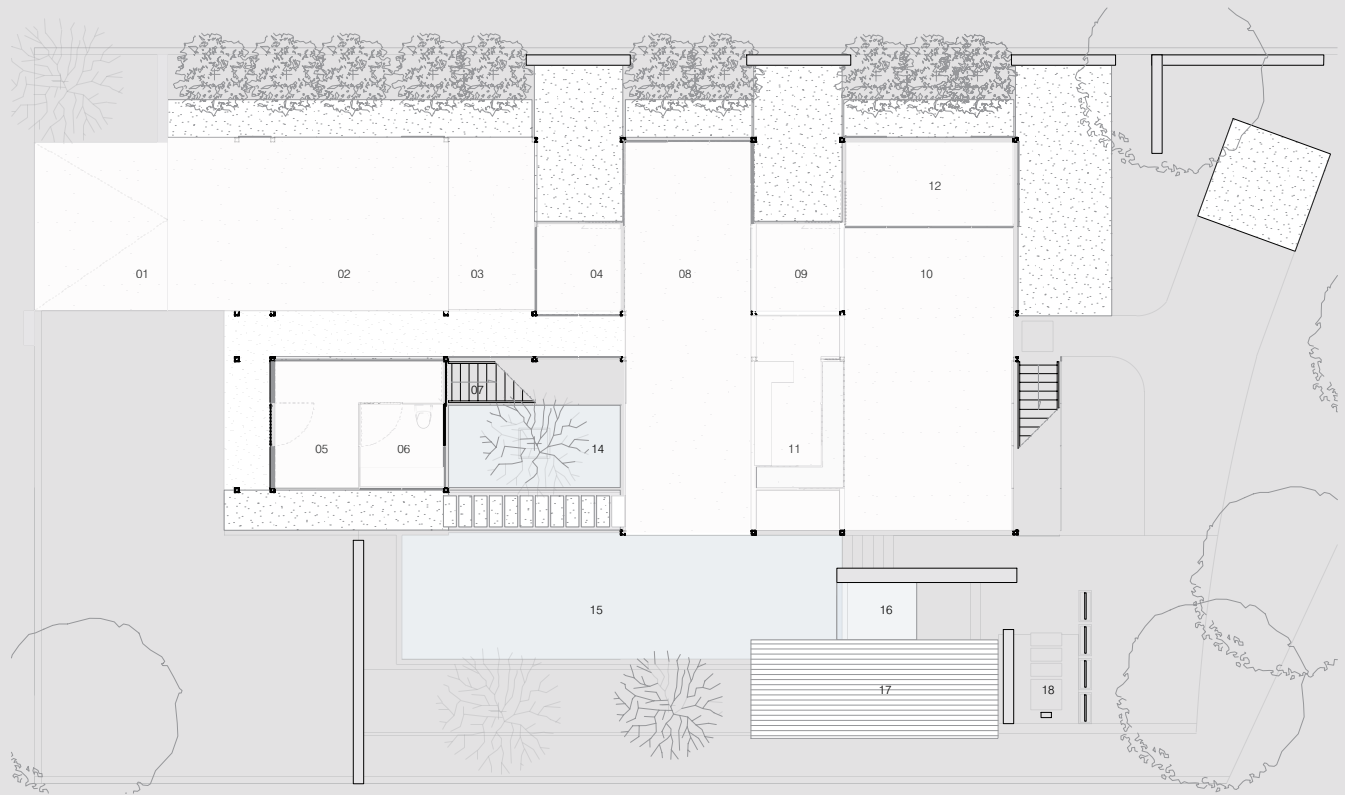
strength • design • value • integrity

Limited availability for 2007...

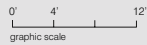
Call us today at (888) 570-5452 and take the first step to owning Jeriko... the most unique product in housing in the last 100 years.



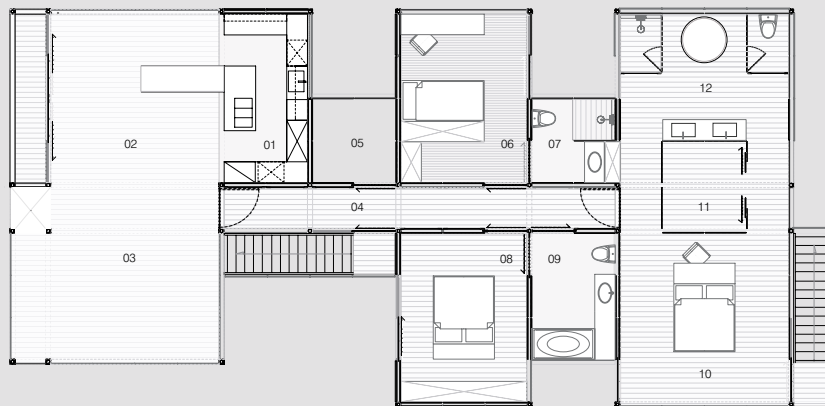
It lives in you!



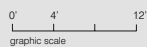
FIRST FLOOR PLAN



- | | | | |
|-------------------------------|---------|-------------------------------------|---------|
| 01. driveway | | 10. entertainment / relaxation | 336sqft |
| 02. garage (16' x 16') | 256sqft | 11. indoor / outdoor bar (12' x 8') | 96sqft |
| 03. workshop (8' x 16') | 128sqft | 12. utility room #3 (16' x 8') | 128sqft |
| 04. utility room #1 (8' x 8') | 64sqft | 13. stairway to master bedroom | |
| 05. foyer (12' x 8') | 96sqft | 14. koi pond | |
| 06. powder room (8' x 8') | 64 sqft | 15. pool | |
| 07. stairway two 2nd level | | 16. jacuzzi | |
| 08. entertainment / lounge | 464sqft | 17. sundeck | |
| 09. utility room #2 (8' x 8') | 64sqft | 18. outdoor shower | |



SECOND FLOOR PLAN



- | | |
|---------------------------------|----------|
| 01. kitchen (8' x 16') | 128 sqft |
| 02. dining room (16' x 16') | 256 sqft |
| 03. living room (16' x 20') | 320 sqft |
| 04. hallway (36' x 4') | 144 sqft |
| 05. laundry room (8' x 8') | 64 sqft |
| 06. kid's bedroom (16' x 12') | 192 sqft |
| 07. kid's bathroom (8' x 8') | 64 sqft |
| 08. guest bedroom (16' x 12') | 192 sqft |
| 09. guest bathroom (12' x 8') | 96 sqft |
| 10. master bedroom (16' x 16') | 256 sqft |
| 11. walk-in-closet (8' x 8') | 64 sqft |
| 12. master bathroom (16' x 12') | 192 sqft |

